

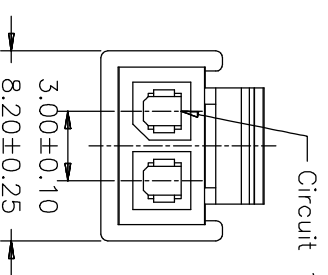
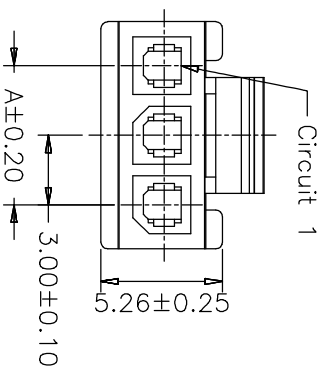
HSE ROHS

SPECIFICATIONS

- Voltage rating: 250V AC, DC
- Current rating: 5A, AC, DC
- Withstanding Voltage: 1500V AC/minute
- Insulation resistance: 1000MΩ min
- Temperature range: -25° C~+105° C
- Contact resistance: 10mΩ max

HOUSING

- Poles: 02-12
- Material: Nylon 66 UL 94V-0



Pin No.	Dimensions	
	A	B
2P	3.00	6.80
3P	6.00	9.80
4P	9.00	12.80
5P	12.00	15.80
6P	15.00	18.80
7P	18.00	21.80
8P	21.00	24.80
9P	24.00	27.80
10P	27.00	30.80
11P	30.00	33.80
12P	33.00	36.80

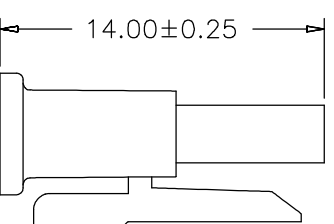
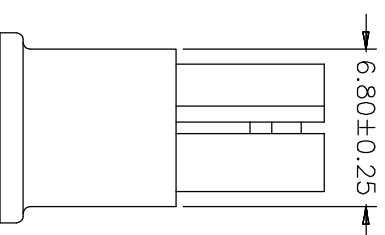
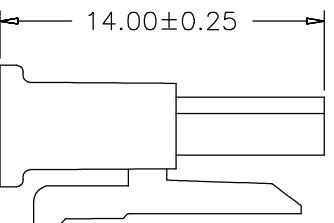
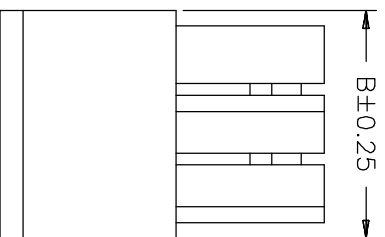
Ordering Information

JL3001H - 1 XX B 01

H=Housing
No. of Pins
1*2-12P
Insulator Color
B=Black

3P~12P

2P



JIN 深圳市锦凌电子有限公司
SHENZHEN JINLING ELECTRONIC CO.,LTD
Tel: 86-755-2997-5806/5802 Fax: 86-755-2997-5892

PART NO. JL3001H-1XXB01

TITLE: 3.00mm Housing Npin

OPERATION	DRAW	ChenWei	19.01.18	SCALE		FIT	
				UNIT	mm	SIZE	A4
X.X	±0.30						
X.XX	±0.20	CHECK					
X.XXX	±0.10						
Angle	±3°	APPROVE					
DIM	TOL						

REV	DATE	MODIFICATION DESCRIPTION	CHANGE
A0	2019.01.18	NEW DRAWING	

1	2	3	4	5	6	7	8	9
---	---	---	---	---	---	---	---	---